



# Wedding Packages





# "Splendor in The Vale"

CELEBRATION PACKAGE

Rental of the property on either  
Friday or Saturday from 9am-11pm

"The Clover Hill Historic Estate"

"The Edmund" Gentlemen's Suite

"The Sophia" Ladies Suite

"Ledgerwood Surrey House"

*Indoor reception venue for up to 200 guests*



## Also Included:

- 200 chairs set up for the ceremony by our team
- Tables set up by our team according to your plan
- 200 chairs for reception
- Wood dining tables inside Ledgerwood
- Choice of table runners/cloth napkins
- Bar area with bistro tables
- Dinnerware provided to include plates, flatware, and glasses
- Complete access to The Gilded Vale décor
- Catering/warming kitchen available for caterers
- Service coordination with vendors
- Team members on site during event

**Splendor in the Vale Package:**

**\$9,000 for up to 200 guests**

*\*Please inquire regarding pricing for additional guests*



# "Clover & Vale"

GILDED WEEKDAY CELEBRATION PACKAGE



One day rental of the property,  
Monday-Thursday from 9am-11pm.

"The Clover Hill Historic Estate"

"The Edmund" Gentlemen's Suite

"The Sophia" Ladies Suite

"Ledgerwood Surrey House"

*Indoor reception venue for up to 100 guests*

## Also Included:

- 100 chairs set up for the ceremony by our team
- Tables set up by our team according to your plan
- 100 chairs for reception
- Wood dining tables inside Ledgerwood
- Choice of table runners/cloth napkins
- Bar area with bistro tables
- Dinnerware provided to include plates, flatware, and glasses
- Complete access to The Gilded Vale décor
- Catering/warming kitchen available for caterers
- Service coordination with vendors

**Clover & Vale Package:**  
\$5,000 for up to 100 guests

*\*Please inquire regarding pricing for additional/less guests*





# Clover Hill Estate

WEDDING EVE PACKAGE

Evening rental of the estate from 3pm-10pm for rehearsal and dinner for up to 50 people

*"The Clover Hill Historic Estate"*

Tables/Chairs For 50

Dinnerware For 50

Rehearsal Practice Area

Wedding Eve Package: \$2,000





# "Beyond the Balustrade"

INCLUSIVE PACKAGE



Rental of the property from Friday at 11am to Sunday 11am

"The Clover Hill Historic Estate"

"The Edmund" Gentlemen's Suite

"The Sophia" Ladies Suite

"Ledgerwood Surrey House"

*Indoor reception venue for up to 200 guests*

2 Nights Clover Hill Historic Home - Sleeps 8

2 Nights "May Ann Cottage"

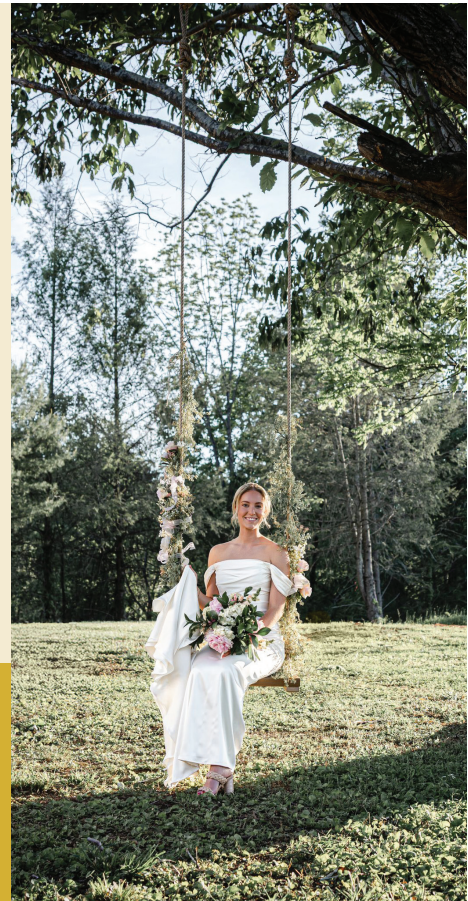
## Also Included:

- 200 chairs set up for the ceremony by our team
- Tables set up by our team according to your plan
- Wedding eve dinner for up to 50 at Clover Hill Estate
- 200 chairs for reception
- Wood dining tables inside Ledgerwood
- Choice of table runners/cloth napkins
- Bar area with bistro tables
- Dinnerware provided to include plates, flatware, and glasses
- Complete access to The Gilded Vale décor
- Catering/warming kitchen available for caterers
- Service coordination with vendors
- Team members on site during event

**Beyond the Balustrade Package:**

**\$13,500 for up to 200 guests**

*\*Please inquire regarding pricing for additional/less guests*





## Extras

Also available to rent for an additional cost:

- Mattie's Place, 2 Bedroom Cottage  
(*< 2 miles From Clover Hill*)
- Carriage Rides for Bride and/or Guests
- May Ann Cottage, 4 Bedrooms
- Please inquire regarding wedding planning and day-of coordination packages

Our team is delighted to discuss other packages for celebrating all of life's special moments. Please inquire with any team member.

**CONTACT US TODAY!**

**336-466-1430**

**[info@thegildedvale.com](mailto:info@thegildedvale.com)**

**[www.TheGildedVale.com](http://www.TheGildedVale.com)**

